

Cheetah Chassis Corporation
32 ft Chassis Reverse B-Train Rear
Standard Specifications

Specification No. Standard

Dated: 2-21-07

Function	Carries one 20 ft ISO Container Meets all DOT, TOFC, AAR, CMVSS, ANSI, SAE and TTMA specifications in effect at the time of manufacture and applicable to operation in Canada.
Overall Length	31 ft. 9 inches
Overall Width	96 inches
Tridem Location	86 inches
Kingpin Location	15 inches from front of chassis
Kingpin Height	47 1/2 to 48 inches
Maximum Rear Height	48 inches
Main Beams	Fabricated I-Beam with 1/2 inch x 4 inch top and bottom flanges and 1/4 inch web. 6 1/2 inch front, 14inch main.
Cross Member	All cross members are formed from 7-gauge steel.
Upper Coupler Assembly	Pick up plate is 5/16" thick and extends approximately 18" behind the kingpin and is reinforced fore and aft by 5/16 inch formed channels
Front Bolsters	Tube type with 6 inch x 8 inch x 5/16".
Rear Bolster	Box type with 3/8 inch x 8 inch top plate and 5/16 inch thick, formed channel lower member.
Twist Lock & Slide Pins	Meets ISO standards and requirements
ICC Bumper	4 inch x 4inch x 3/16 inch Tube step bumper. Main beam and bumper struts are extended 2 inches to protect rear bolster. (No rubber dock bumpers)
Landing Gear	Two speed AAR approved, square leg. 50,000 lb. lift capacity and 140,000 static load capacity.
Landing Gear Axle Type	Solid Axle
Landing Gear Foot Group	10 in. by 10 in. Low profile sandshoe
Crank Handle Location	Road side handle
Suspension	Eveley
Axle Quantity	Three Axles
Suspension Type	Spring-Ride
Axle Centers	60 inch
Springs	Three Leaf
Hub Type	Hub piloted for disc wheels
Hub Material	Steel
Hub Manufacturer	KIC
Drum	Outboard mounted
Rims/Wheel	8 1/4 X 22.5 hub piloted tubeless
Wheel/Rim Color	White
Rim Spacer	None
Tires	Cheetah Supplied
Tire Size	11R 22.5
Tire Inflation System	None
Axle Vendor	Meritor
Axle Type	TN

Customer Approval Initials: _____

Cheetah Chassis Corporation
32 ft Chassis Reverse B-Train Rear
Standard Specifications

Dated: 2-21-07

Specification No. Standard

Wall Thickness	1/2 inch
Axle Track	71.5
Brake Lining Options	Standard
Lubrication	Oil 90 wt.
Slack Adjusters	Bendix 5 1/2 inch
Brake System Vendor	WABCO
Brake System Type	2S1M
Brake Chambers	Haldex
Hubodometer	None
Electrical System	12 volt, 7-way split pin receptacle plug; modular wiring harness
Light Vendor	TruckLite
Light Attachment	Grommet mounted
Light Type	Incandescent
Metal Preparation	Clean, dry steel and NACE No. 3 /SSPC-SP-6 "Commercial Blast Cleaning"
Primer	70% Zinc Rich Primer
Topcoat	Urethane Topcoat
Color	Black
Markings	FHWA plate, tare weight, 2 small Cheetah logos.
Customer Decals	Furnished by Customer
Conspicuity	Meets DOT requirements
Registration Holder	Plastic with clear screw on top
Mud Flaps	Cheetah/Markham
Mud Flap Mounting	4 mounting bolts
Steel & Fasteners	All structural steel is ASTM-A572, Grade 50, or ASTM-A607, Grade 50. All structural fasteners are Grade 5 or better and are zinc coated
GVWR	60,000 lbs
Weight	Approximately 9,000 lbs. + 2%

Customer Approval Initials: _____

**Cheetah Chassis Corporation
32 ft Chassis Reverse B-Train Rear
Standard Specifications**

Specification No. Standard

Dated: 2-21-07

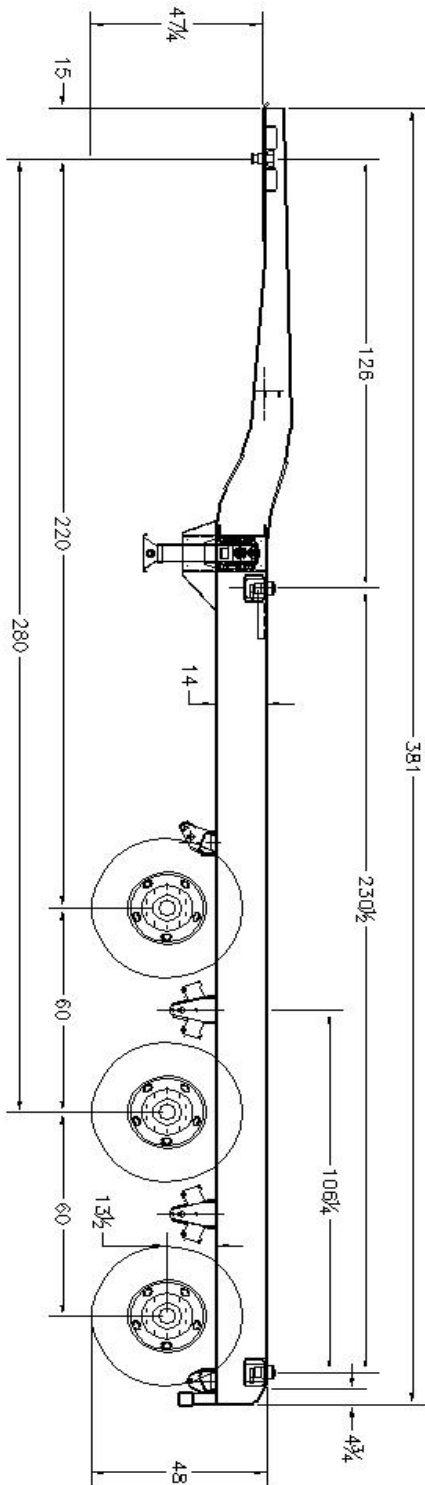
B010343

REV.

REMARKS

DATE

DRN



THIS DRAWING IS LOANED FOR PURPOSE OF ENGINEERING STUDY ONLY WITH THE UNDERSTANDING THAT IT SHALL BE HELD IN CONFIDENCE AND FOR THE PURPOSES OF CHEETAH CHASSIS CORP. IT IS NOT TO BE REPRODUCED, COPIED, USED, DISCLOSED OR DISPOSED OF DIRECTLY OR INDIRECTLY AND IS NOT TO BE USED IN WHOLE OR IN PART TO ASSIST IN MAKING OR TO FURNISH ANY INFORMATION FOR MAKING OF DRAWINGS, PRINTS, APPARATUS AND EQUIPMENT MATERIALS OR PARTS THEREOF EXCEPT IN ACCORDANCE WITH THE EXPRESS WRITTEN CONSENT OF CHEETAH CHASSIS CORPORATION.

TELEBORICES UNCORRECTED PART NO. 142 DATE: 1-1-08 ANGLE 21	CHEETAH CHASSIS CORP GENERAL ARRANGEMENT 32 FT REAR REVERSE B-TRAIN
NEW DRAWN BY: JAT DATE: 06/20/08 SHEET NO: 1 OF 1	PART NUMBER B010343

Customer Approval Initials: _____