

Cheetah Chassis Corporation
50 ft. Concrete Panel Trailer
Standard Specifications

Specification No. Standard

Revised: 7-14-08

Function	Carries two 30 ft x 12 ft 9 in x 8 in panels weighing 19,000 lbs. each and meets all DOT, FMVSS, ANSI, SAE and TTMA specifications in effect at the time of manufacture and applicable to operation in the United States.
Overall Length	49 ft. 11 in.
Overall Width	102 inches
Tandem Location	54 3/4 inches
Kingpin Location	20 1/4 inches from front
Maximum Frame Height	144 5/8 in. excluding hand rails
Frame Width	100 in.
Main Beams	A-Frame, channel, and 3"x3" tubing
Upper Coupler Assembly	Pick up plate is 1/4" thick and extends approximately 19" behind the kingpin and is reinforced fore and aft by 8 inch formed channels
Walk Way	Walk way extends the full length of the loading area with access ladder.
ICC Bumper	4 inch x 4inch x 3/16 inch tube step bumper.
Landing Gear	Just two speed AAR approved, square leg. 50,000 lb. lift capacity and 140,000 static load capacity.
Landing Gear Axle Type	Standard
Landing Gear Foot Group	10 in. by 12 in. Low profile sandshoe
Crank Handle Location	Curb side handle
Rear Prop Leg	Manual drop down in 2 inch increments
Axle Quantity	Two Axles
Suspension Type	Air-Ride with automatic dump and ride height over ride switch.
Axle Centers	54 inch
Hub Type	Hub piloted for disc wheels
Hub Material	Steel
Drum	Outboard mounted
Rims/Wheel	8 1/4 X 22.5 hub piloted tubeless
Wheel/Rim Color	White
Tires	Yokohama RY587
Tire Size	295/75R 22.5
Tire Inflation System	None
Axle Type	TQ
Wall Thickness	5/8 inch
Axle Track	77.5
Brake Lining Options	Standard
Lubrication	Oil 90 wt.
Brake System Type	2S1M
Brake Chambers	30/30
Hubodometer	None
Electrical System	12 volt, 7-way split pin receptacle plug; modular wiring harness
Light Attachment	Grommet mounted

Customer Approval Initials: _____

Cheetah Chassis Corporation
50 ft. Concrete Panel Trailer
Standard Specifications

Revised: 7-14-08

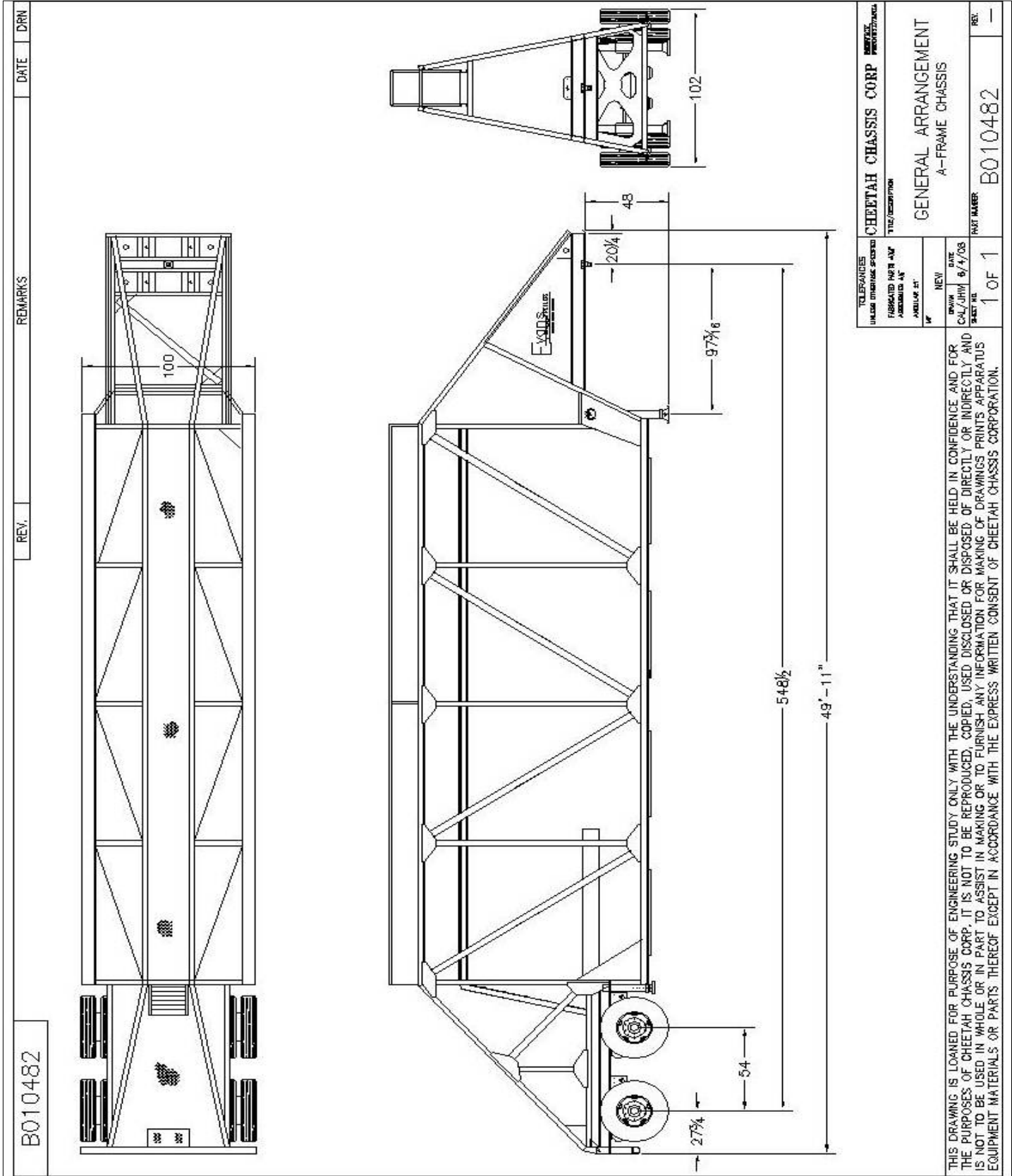
Specification No. Standard	
Light Type	LED
Metal Preparation	Clean, dry steel and NACE No. 3 /SSPC-SP-6 "Commercial Blast Cleaning"
Primer	70% Zinc Rich Primer
Topcoat	Urethane Topcoat
Color	Deep Blue
Markings	FHWA plate, tare weight, 2 Evans logos.
Customer Decals	Furnished by Customer
Conspicuity	Meets DOT requirements
Registration Holder	Plastic with clear screw on top
Mud Flaps	Plastic anti sail
Steel & Fasteners	All structural steel is ASTM-A572, Grade 50, or ASTM- A607, Grade 50. All structural fasteners are Grade 5 or better and are zinc coated
GVWR	51,600 lbs
Weight	Approximately 13,600 lbs. +/- 2%

Customer Approval Initials: _____

Cheetah Chassis Corporation
 50 ft. Concrete Panel Trailer
 Standard Specifications

Specification No. Standard

Revised: 7-14-08



Customer Approval Initials: _____