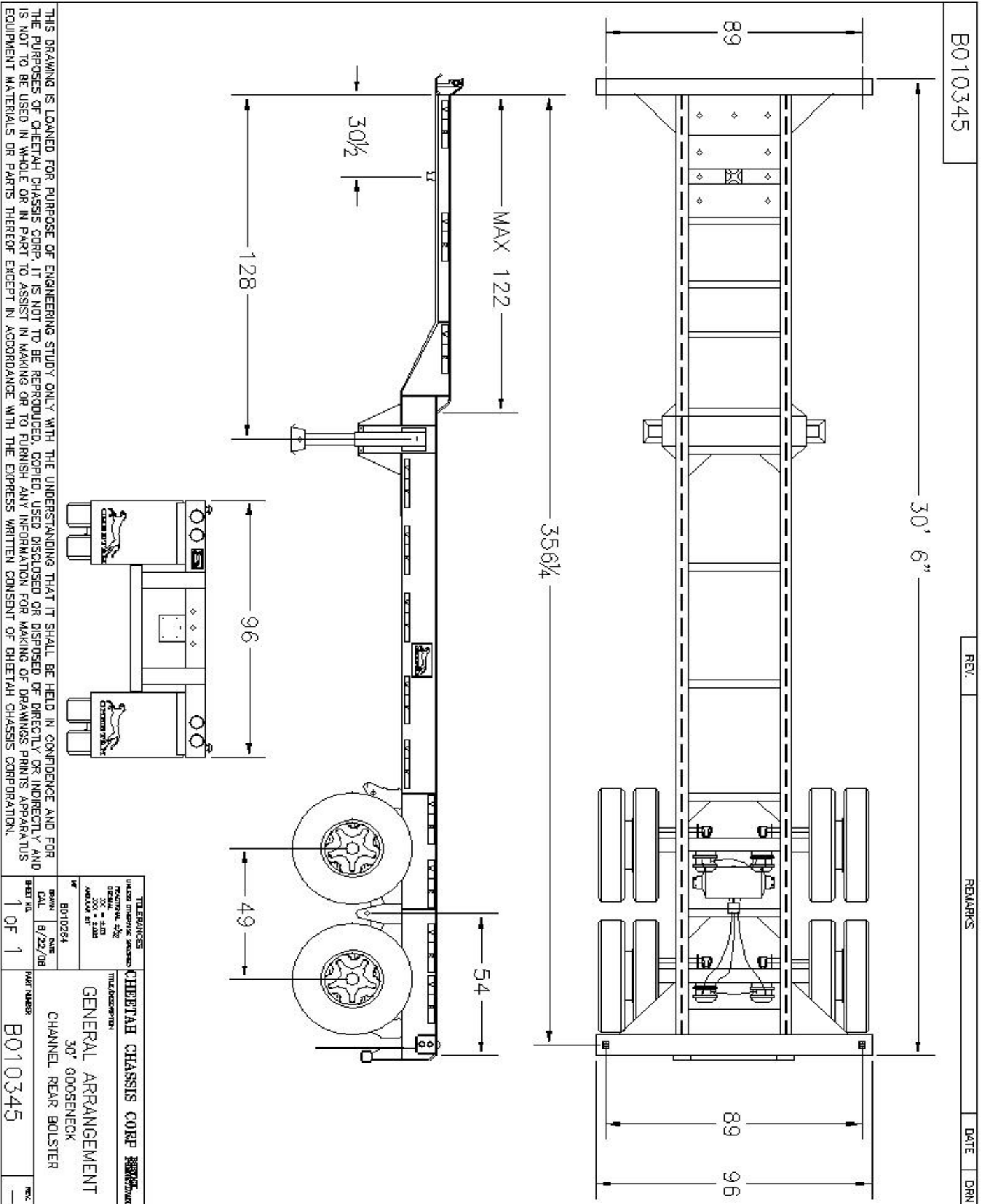


**Cheetah Chassis Corporation
30 ft. Gooseneck Chassis
Standard Specifications**

Specification No. STANDARD

Revised: 6-22-06



B010345

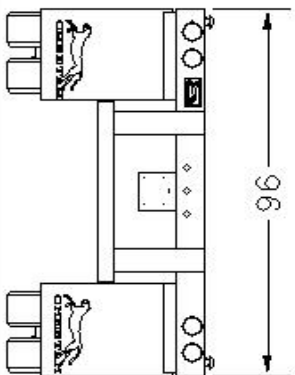
REV.

REMARKS

DATE

DRN

THIS DRAWING IS LOANED FOR PURPOSE OF ENGINEERING STUDY ONLY WITH THE UNDERSTANDING THAT IT SHALL BE HELD IN CONFIDENCE AND FOR THE PURPOSES OF CHEETAH CHASSIS CORP. IT IS NOT TO BE REPRODUCED, COPIED, USED, DISCLOSED OR DISPOSED OF DIRECTLY OR INDIRECTLY AND IS NOT TO BE USED IN WHOLE OR IN PART TO ASSIST IN MAKING OR TO FURNISH ANY INFORMATION FOR MAKING OF DRAWINGS, PRINTS, APPARATUS, EQUIPMENT MATERIALS OR PARTS THEREOF EXCEPT IN ACCORDANCE WITH THE EXPRESS WRITTEN CONSENT OF CHEETAH CHASSIS CORPORATION.



TELEVISIONS UNLESS OTHERWISE SPECIFIED MATERIAL SPEC. DIM. IN. - 1/8 DIM. IN. - 1/16 DIM. IN. - 1/32		CHEETAH CHASSIS CORP. MILWAUKEE, WIS.	
DRAWN B010284	DATE 8/22/06	GENERAL ARRANGEMENT 30' GOOSENECK CHANNEL REAR BOLSTER	

SHEET NO. 1 OF 1	PART NUMBER B010345
---------------------	------------------------

Customer Approval Initials: _____