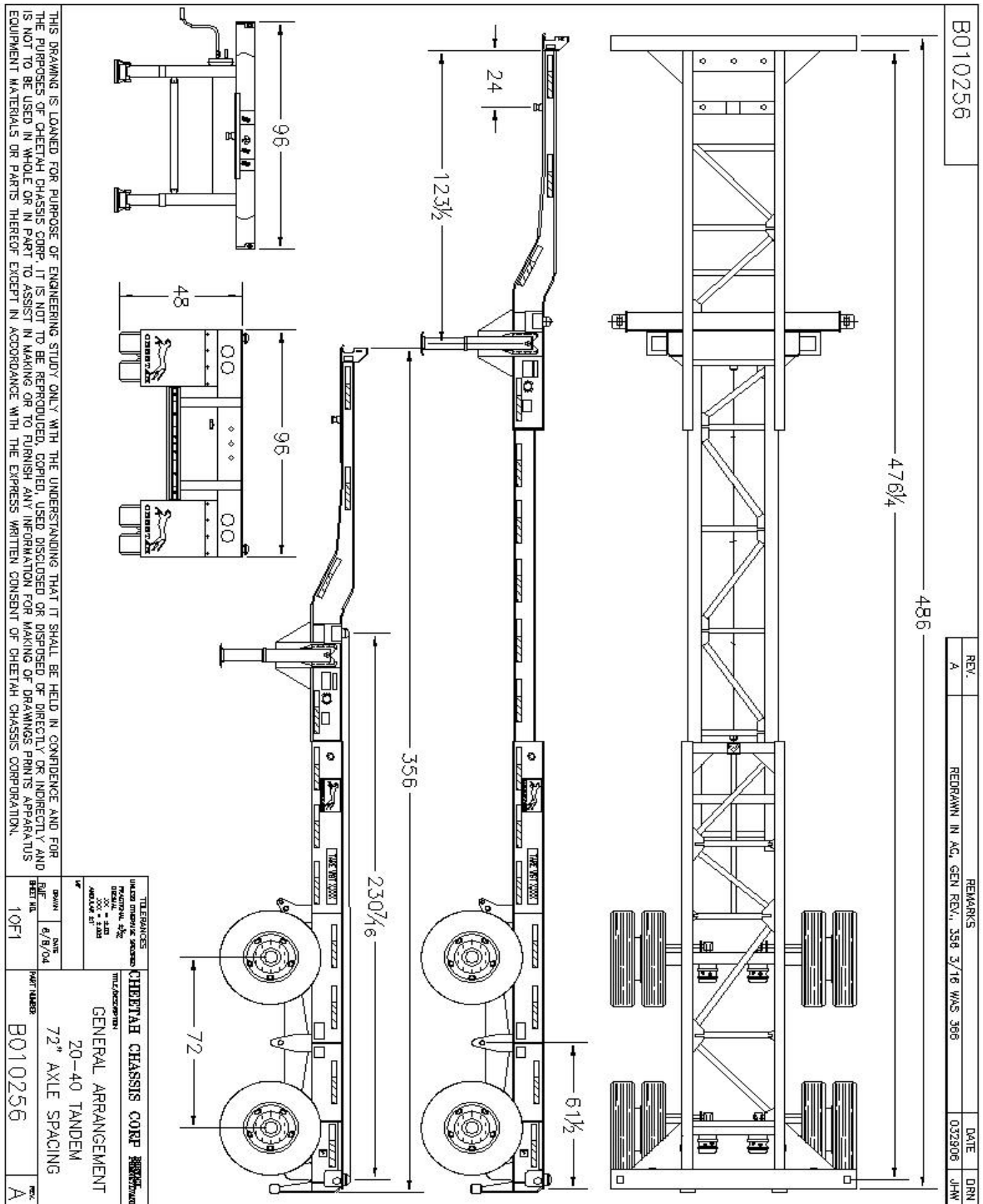


**Cheetah Chassis Corporation**  
**20-40 City Tandem Axle Combo Chassis**  
**Standard Specifications**

Specification No. STANDARD

Revised: 6-23-06



THIS DRAWING IS LOANED FOR PURPOSE OF ENGINEERING STUDY ONLY WITH THE UNDERSTANDING THAT IT SHALL BE HELD IN CONFIDENCE AND FOR THE PURPOSES OF CHEETAH CHASSIS CORP. IT IS NOT TO BE REPRODUCED, COPIED, USED DISCLOSED OR MAKING OF DIRECTLY OR INDIRECTLY AND IS NOT TO BE USED IN WHOLE OR IN PART TO ASSIST IN MAKING OR TO FURNISH ANY INFORMATION FOR MAKING OF DRAWINGS PRINTS APPARATUS EQUIPMENT MATERIALS OR PARTS THEREOF EXCEPT IN ACCORDANCE WITH THE EXPRESS WRITTEN CONSENT OF CHEETAH CHASSIS CORPORATION.

TITLE BLOCK UNLESS OTHERWISE SPECIFIED DRAWN BY: JHN CHECKED BY: JHN DATE: 6/8/04 APPROVED BY: JHN		CHEETAH CHASSIS CORP. GENERAL ARRANGEMENT 20-40 TANDEM 72" AXLE SPACING	
PART NUMBER B010256	DATE 6/8/04	REV. NUMBER 10F1	DATE 032906

Customer Approval Initials: \_\_\_\_\_